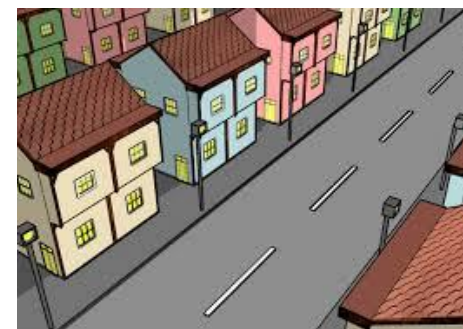


Year 1 & 2

Autumn 1

Street Detectives



As the children settle into their new classroom environment we will be thinking about our local area. We will talk about our homes and the local environment and what we can do to look after the places that we live. We will also be looking at maps and where we are located in the world.

To enrich our learning we will:

- Inviting parents to visit 'Mini Wallasey'
- Visiting Earlston Library and having a look around our local area

English	Mathematics	Humanities	Science
<p>Key texts:</p> <p>Year 1</p> <p>Farmer Duck</p> <p>Pig in the pond</p> <p>Monkey Puzzles</p> <p>Year 2:</p> <p>The Day the crayons quit</p> <p>Tuesday</p> <p>Halibut Jackson</p> <p>Written outcomes:</p> <ul style="list-style-type: none"> • Letters • Recount • Invitations • Predictions • Character description 	<ul style="list-style-type: none"> • Working within 10 and then 20 to add and subtract. • Reading and writing numbers within 10. • Numbers to 100. • Addition and Subtraction. 	<ul style="list-style-type: none"> • <u>Geography – understanding my world</u> • Think about our local area: New Brighton and compare to other localities • Explore where we live and describe it. • Look at maps and think about where we live. Link this to our family tree and places that our family comes from. 	<p>Materials</p> <ul style="list-style-type: none"> • Distinguish between an object and the material from which it is made • Identify and name a variety of everyday materials, including wood, plastic, glass, metal, water, and rock • Describe the simple physical properties of a variety of everyday materials
Arts	Physical Education	SMSC	
<ul style="list-style-type: none"> • Sketching the local area • Model of houses. 	<ul style="list-style-type: none"> • Gymnastics. 	<p>Social – Who are the people in our local area?</p> <p>Moral – Looking after the environment</p> <p>Cultural – The buildings in our areas.</p>	